

High Design Products for Home & Life

T. LOCKMAN LLC



HANDBAG  
2011 CATALOG

## C o n t a c t

### RETAIL ORDER CONTACT INFORMATION:

**404-748-1031**

FAX: 866-406-7416

### WHOLESALE & FOR-THE-TRADE CONTACT INFORMATION:

**404-748-1018**

FAX: 866-406-7416

Hours of operation:  
Monday through Friday.  
9am -5pm EST.

### OFFICE & WAREHOUSE ADDRESS:

1854 Marietta Blvd., NW  
Atlanta, GA 30318

# T. LOCKMAN LLC

## History

- E s t . 2 0 0 3 -

T.Lockman LLC has a long history of providing high design, luxury home furnishings, and fashion accessories. Opening in High Point, North Carolina in 2003, T.Lockman LLC focuses on bringing the highest quality home and life accessories from classic, old-world manufacturers. Best known for clean design, sophistication, utilization of the best materials, neoclassical styling, and refined craftsmanship. With several lines of wool, cashmere, and leather goods, T.Lockman has defined itself as a leader in home and life wares.



6



8



136



164



74



86



170



178

**BOOK ONE:  
Handbags & Accessories**

|                           |     |
|---------------------------|-----|
| Tampico .....             | 8   |
| Les Touristes .....       | 74  |
| Pasion Argentina .....    | 86  |
| Baobab .....              | 136 |
| Definition of Terms ..... | 160 |
| Care Instructions .....   | 161 |
| Handbag Color Index ..... | 162 |

**BOOK TWO:**

**Gifts**

|                             |     |
|-----------------------------|-----|
| Cashmere Water Bottle ..... | 166 |
| Orignalimals .....          | 168 |

**BOOK THREE:**

**Order Information**

|                               |     |
|-------------------------------|-----|
| Retail Guidelines .....       | 172 |
| To-the-Trade Guidelines ..... | 174 |
| Wholesale Guidelines .....    | 176 |

# T. LOCKMAN LLC

## BOOK ONE:

### Handbags & Accessories

Tampico Collection ..... 8

Les Touristes Collection ..... 74

Pasion Argentina Collection .... 86

Baobab Collection ..... 136

Definition of Terms ..... 160

Care Instructions ..... 161

Handbag Color Index ..... 162

BOOK ONE

T. LOCKMAN LLC

# Handbags & Accessories



Crafted from high-quality leathers and textiles milled in the South of France, the Tampico collection offers a masculine silhouette with the beauty and practicality of every woman's favorite handbag. Made primarily of cotton canvas, these bags fold flat making them perfect for travel. With an array of bold colors achieved using vegetable dyes and leather that only softens with age, this collection illustrates a successful combination of elegance and timeless simplicity.





The image features a collection of leather and canvas accessories. In the foreground, there are several dark brown leather straps with white stitching and metal buckles. A piece of olive green canvas fabric is visible on the right, with a black leather knife tucked into a pocket. A maroon canvas bag is partially visible at the bottom left. The background is a dark, textured surface.

T. LOCKMAN EEC  
Tampico  
Collection  
*- France -*



BRONZE

**Zan Pirate Zip**

**6204**

Weather-treated canvas with  
leather handle and accents.

Handle drop 5".

24.5" W @ mouth x 10.5"W @

base x 12.5" H.

*Made in France.*



SLATE GRIS



**Cabas Pirate**

**6203**

Weather-treated canvas with  
leather handle and accents.

Handle drop 6". Inside pocket  
9.5" x 7.5".

17" W x 5" D x 11" H

*Made in France*



SLATE GRIS



[www.tlockman.com](http://www.tlockman.com) • 404-748-1018



OLIVE

INCA

KOALA

NAVY

**Officer Weekend Wool Bag**

**1606**

Wool with leather handle and accents.

Fold over closure with snap.

Handle drop 8". Inside pocket 10" x 6".

16.5" W x 5.5" D x 12" H.

*Made in France*



KOALA

**Vagabond Bag**

**4266**

Wool with leather accents.  
Leather bottom & leather zip  
closure.

Handle drop 8".

18" W x 5" D x 16" H

*Made in France*

GREY  
BROWN







NAVY

GREY BROWN

NAVY



**Le Charlie Bag  
4256**

Boiled wool with leather accents.  
2 detachable wool-backed leather  
straps 25" x 2.5".  
External snap pocket/open pocket  
combo 8" W x 6" H.  
Bottom 10.5" dia. x 12" H .  
*Made in France.*

OLIVE



OLIVE

www.fox.com • 404-748-1000

**Besace Leather**

**Messenger**

**4751**

Leather

Fold over closure.

Adjustable canvas strap.

Inside pocket 10.5" W x 6.5" H.

17" W x 7" D x 13" H.

*Made in France.*



GREY

BROWN



BROWN



GREY

TAUPE



TAUPE

**Adventure Supple**

**4747**

Leather with leather straps.  
Magnet closure. Inside pocket:  
8" H x 5" W.  
Handle drop 10".  
W @ top 21" x W @ base 11" x  
H 12".  
*Made in France*



TAUPE



BLACK DADDY CROCO

**Recycled Tall Cabas  
Business Totes  
3306**  
Hard pressed recycled leather  
Handle drop 6.25".  
11.25" W x 4.5" D x 16.25" H.  
*Made in France*



BROWN DADDY CROCO





BLACK DADDY CROCO



BLACK SCOUBIDOU



BLACK DADDY  
CROCO



BLACK DADDY CROCO



BROWN  
DADDY  
CROCO



BLACK  
DADDY  
CROCO

### Recycled Wide Cabas

354

Hard pressed recycled leather.

Handle drop 8" .

16.25" W x 4.5" D x 11.25" H.

Made in France



BROWN  
DADDY  
CROCO



MIDNIGHT

**Paolo Bag  
5019**

Polytrill / synthetic fibers  
Dual zipper closure. Interior  
pocket.

Handle drop 7". Long strap 16".  
18" W x 9" D x 15" H.  
*Made in France*



MIDNIGHT



MIDNIGHT

**Palace Large**

**4776.L**

100% Cotton canvas with leather accents.  
Snap closure, expansion tabs @ sides. External pocket.  
Handle drop 6". Long strap 13.5".

16" W x 10.5" D x 17" H.

Made in France

\* Full color spectrum next page

P A L A C E



SAND



# E L A R G E

in 12 colors



TERRA COTTA

CURRY

SAND

CIEL / CLOUD BLUE



SAFARI

KIWI

JUNGLE

MARGAUX





TAUPE

GALET / STONE

ARDOISE

VIOLET



**Palace Small**

**4776.S**

100% Cotton canvas  
Snap closure, expansion tabs @  
sides. External pocket.

Handle drop 8".

14" W x 7.5" D x 14" H.

*Made in France*

*\* Full color spectrum next page*



GLYCINE



GLYCINE



CIEL / CLOUD BLUE

BLEU PETROL

GLYCINE / PERIWINKLE

FUSCHIA



CORAL

SAFARI

KIWI

CURRY

# WEEKEND

www.tlockman.com • 404-748-1018



SAFARI

# ER



Dark  
Brown

Charcoal

Jungle

Safari

Black

**Weekender Linen, XL**  
**1037.XL**

Linen, recycled leather bottom.  
zip closure. Internal pocket.  
Handle drop 4". Long Strap 20".  
17.5" W x 9.5" D x 20" H .  
*Made in France*



**Linen Weekender, Large  
1037.LG**

Linen w/ Recycled leather  
bottom.

Zip closure. Internal open  
pocket.

Handle drop 6.5".

L @ top 24" x L @ base 16" x W

@ base 19.5".

*Made in France.*

NATURAL







LIGHT GREY

# BOHEME

## **Boheme Linen Bag**

**3229**

Linen with leather accents and zip closure. Internal pocket.

Handle Drop 11".

17" W x 6" D x 18.5" H.

*Made in France.*



LIGHT GREY

DARK GREY

NATURAL

# SUNSBAG

www.tlockman.com • 404-748-1018



CIEL / CLOUD BLUE



**Sunset, Flat Handle**

**4029**

100% Cotton canvas

Snap closure.

Removable zip pocket/purse:

9" x 6.5".

Handle 3" drop. Strap 20" long.

18" W x 10"D x 10" H.

*Made in France.*

\* Full color spectrum next page

CIEL / CLOUD BLUE

REMOVABLE  
ZIP POCKET



CIEL / CLOUD BLUE



BLACK

MARINE

CIEL / CLOUD BLUE

TAUPE



CURRY

VIOLET

FUSCHIA

**Sunset, Round Handle**

**4028**

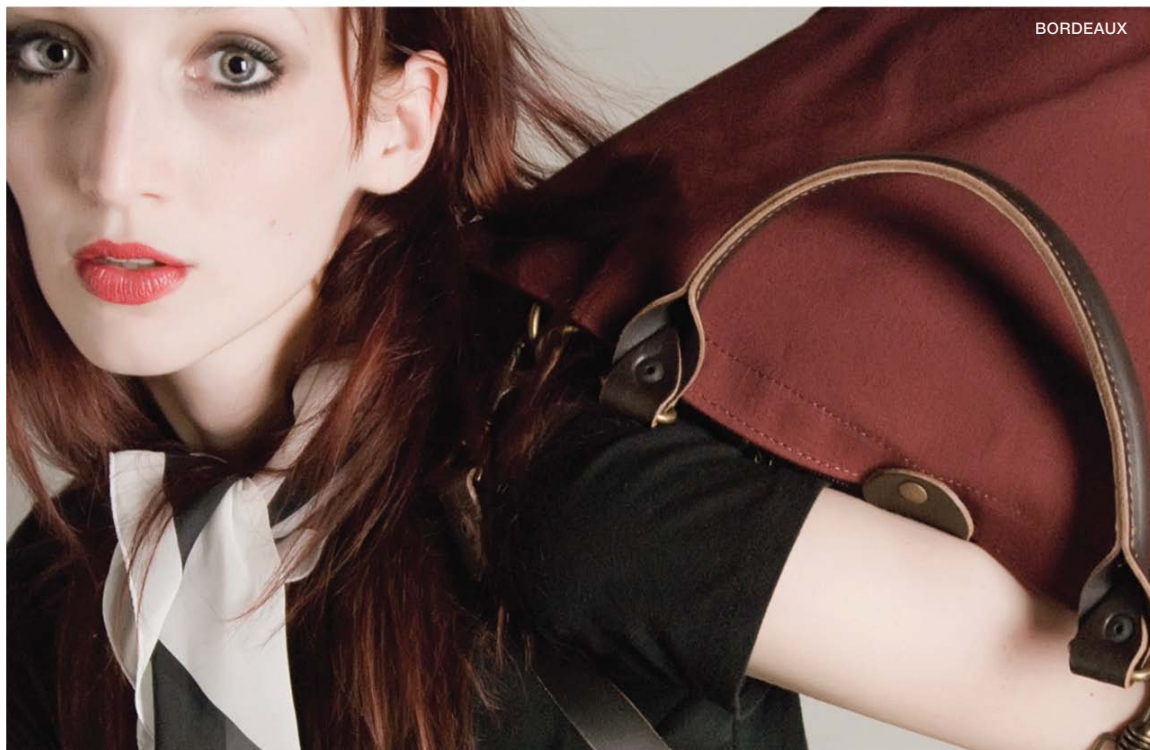
100% Cotton canvas, leather accents with a snap closure.  
Removable zip pocket / purse  
9" W x 6.5" H.  
Handle 3" drop. Strap 20" long.  
18" W x 10" D x 10" H.  
*Made in France*

*\* Full color spectrum next page*



BORDEAUX





BORDEAUX

[www.tlockman.com](http://www.tlockman.com) • 404-748-1018



BORDEAUX

TAUPE



CURRY



KIWI



CAMEL

ESPRESSO  
BROWN

GRIS



GRIS

# CITY BAG



GRIS

**City Bag**  
**4750**  
Leather w/ zipper closure.  
Adjustable canvas strap.  
Inside pocket.  
5.5" W x 5.5" D x 13.5" H.  
*Made in France.*

www.tlockman.com • 404-748-1018



BLEU PETROL



CURRY

**Traffic Bag**

**4001**

100% Cotton canvas, leather accents and a snap closure. Inside pocket.

Handle drop 6".

17" W x 6.25" D x 12" H.

Made in France.

\* Full color spectrum next page



TERRA COTTA

CURRY

BLEU PETROL

TERRA COTTA

ARDOISE / GREY

BORDEAUX







MARINE

VIOLET

BROWN

JUNGLE

**Traffic Bag  
4001**

100% Cotton canvas and leather accents with snap closure.  
Inside pocket.  
Handle drop 6".  
17" W x 6.25" D x 12" H.  
*Made in France*



BLEU PETROL

COFFEE  
404-748-1018  
www.tlockman.com

**Cape Cod, Small  
4011.S**

100% Cotton canvas, leather accents snap closure, expansion tabs @ sides. Inside pocket w/ key fob.

Handle drop 7".

14" W x 5.5" D x 12" H.

Made in France

FUSCHIA







CURRY

VIOLET

GLYCINE / PERIWINKLE

CIEL / CLOUD BLUE

FUSCHIA

**Cape Cod, Small**

**4011.S**

100% Cotton canvas, leather accents snap closure & expansion tabs.

Inside pocket w/ key fob.

Handle drop 7".

14" W x 5.5" D x 12" H.

*Made in France*

FUSCHIA

SAFARI

www.tloockman.com • 404-748-1018



SAFARI

**Cape Cod, XL**

**4011.XL**

100% Cotton canvas

Snap closure, side expansion

tabs. Inside pocket w/ key fob.

Handle drop 8.5".

17" W x 6.25" D x 12" H.

*Made in France*

*\* Full color spectrum next page*



SAFARI

SAFARI



GALET / STONE



TAUPE





BORDEAUX



ARDOISE



GRIS / SLATE  
(WEATHER TREATED)





PEWTER

**West Bag**

**4044**

100% Cotton canvas, leather accents with zip closure. Zippered side pocket on each end.

Handle drop 8.75".

L @ top 20" x L @ base 11" x

W @ top 6" x W @ base 10" x

H 11.75".

*Made in France*



PEWTER



JUNGLE

**Sam Bag**

**4016**

100% Cotton canvas with leather accents and zip closure. Handle drop 4". Strap 21" long. 5" W x 6" D x 15" H. Made in France



SAFARI

BLACK



JUNGLE



ARDOISE / GREY



JUNGLE



LG

TAUPE, XL

**Voyager Bag, XL**  
**4160.XL**

Suede with leather accents,  
Zip closure. Internal open  
pocket.

Handle drop 9".

16.25" W x 6"D x 13.75" H.

*Made in France*



TAUPE, XL



ARDOISE / GREY, XL

ARDOISE / GREY, XL



TAUPE, LG

**Voyager Bag, Large**

**4160.LG**

Suede with leather accents.  
Zip closure. Internal open  
pocket.

Handle drop 9" .  
18" W x 6" D x 8" H.

*Made in France*



**Porte Document Bag**

**4233**

Suede with leather accents.  
zip closure.

Handle drop 3".

14.5" W x 2.25" D x 10.25" H.

*Made in France*

BROWN



TAUPE



OLIVE



BROWN





BROWN



OLIVE



TAUPE

**Clutch  
4162**

Suede, leather, zip closure  
leather ties as handle, 10 in long.  
2 external pockets (1 per side).  
11.75" W x 1.5" D x 7" H.  
*Made in France*

**T**his collection of vibrant bags and totes is made using natural materials. Crafted from patterned cotton canvas designed in Paris, this line of bags includes an assortment of utilitarian shapes, colors, and sizes. Their lightweight and flexible nature allows them to be easily folded flat for storage, yet they are durable enough for everyday use.





T. LOCKMAN LLC  
Les Touristes  
collection  
- France -



6  
p o c k e t  
C I T Y  
B A G

**6 Pocket City Bag**

**City6.ORG**

100% Cotton canvas w/ zipper and snap closures. 2 External pockets. 2 Internal pockets.

Handle drop 7".

17.5" W x 6" D x 12" H.

*Made in France*



the playful essence  
of spring



ORCHID PRINT



ORCHID PRINT

**Overnight Bag**

***OVRNT. ORC***

100% Cotton canvas, zipper  
closure

handle drop 8". 2 Internal  
pockets .

12" W x 5.5" D x 16.5" H.

*Made in France*



PATCHWORK PATTERN

**Magazine Bag**

**MAG.**

100% Cotton. Internal zip pocket. Handle drop 8".  
12" W x 5.5" D x 16.5" H.  
*Made in France*



TEAL PARIS PATTERN



PATCHWORK PATTERN

## Cosmetics Bags

### COSM.

100% Cotton fully lined  
w/ zip closure. 2 Interior  
pockets.

11.75" W x 3.5" D x 8.5" H

*Made in France*

# C O S M E T I C S



NOUVEAU MORNING

MORRIS FIELD

NOUVEAU DARK

TEAL PARIS





NOUVEAU MORNING



NOUVEAU DARK



MORRIS FIELD



TEAL PARIS

**Large Zippered Pocket**

***Zip.Lg.TP***

100% Cotton, zips across length  
of top, fully lined.

12" W x 8.75"H

*Made in France*



TEAL PARIS

**Small Zippered Pocket**

*Zip.Lg.ET*

100% Cotton, zips across length  
of top, fully lined.

8.2" W x 6" H

*Made in France*



TEAL EIFFEL TOWERS



BLUE DOTS

**Girl Tote**  
**GIRL.DOT**  
100% Cotton, fully lined.  
Handle drop 8".  
11.75"W x 13.3"H.  
*Made in France*



BLUE DOTS



PINK ORCHID

**Girl Tote**  
**G/RL.ORG**  
100% Cotton, fully lined.  
Handle drop 8".  
11.75"W x 13.3"H.  
*Made in France*



**M**ade in Argentina, this collection of bohemian-style leather and suede handbags are simple and sensible. They are crafted for us by a Fair Trade company in Buenos Aires providing them a hint of South American flair. Each bag is equipped with a mobile phone slot, pocket, and key fob, and comes come in a variety of bright, vibrant colors achieved using eco-friendly vegetable dyes.





T. LOCKMAN LLC  
P á s i ó n  
A r g e n t i n a  
C o l l e c t i o n  
- A r g e n t i n a -



DISTRESSED BROWN



DISTRESSED BROWN

DISTRESSED BLACK

**Distressed Leather  
Campesino Bag**  
*Arg. Camp.DL*

Leather, fully lined inside, fold over closure with magnetic snap.  
Internal pocket, cell slot, w/ key fob  
Handle drop 19".  
14" W x 2" D x 17" H.  
*Made in Argentina*



## Campesino Bag

*Arg. Camp. Sd*

Suede lined inside | fold over  
closure with magnetic snap.  
Internal pocket, cell slot w/  
key fob

Handle drop 19".

14"H x 2" x 17"

Made in Argentina



VIOLET

ORANGE



VIOLET



BLACK



BLACK



BLACK

**Olympia Leather, Large**  
**Arg.Oly.L.Lg**  
Napa Leather  
Internal zip pocket, Phone slot,  
w/ key fob  
Handle drop 8.5".  
12" W x 6" D x 14" H.  
*Made in Argentina*



BLACK

www.tloekman.com • 404-748-1018



WHITE, LG



WHITE, LG



WHITE, SM

**Olympia Leather, Large**  
**Arg.Oly.L.Lg**  
Napa Leather  
Internal zip pocket, phone slot,  
w/ key fob.  
Handle drop 8.5".  
12" W x 6" D x 14" H  
*Made in Argentina*

**Olympia Leather, Small**  
**Arg.Oly.L.Sm**  
Napa Leather  
Internal zip pocket, phone slot,  
w/ key fob.  
Handle drop 8".  
9" W x 7.5" D x 9" H  
*Made in Argentina*



WHITE, LG



**Olympia Leather, Small**

**Arg.Oly.L.Sm**

Napa Leather

Internal zip pocket, phone slot,  
w/ key fob.

Handle drop 8".

9" W x 7.5" D x 9" H

*Made in Argentina*

**Olympia Leather, Large**

**Arg.Oly.L.Lg**

Napa Leather

Internal zip pocket, phone slot,  
w/ key fob.

Handle drop 8.5".

12" W x 6" D x 14" H

*Made in Argentina*



TAN, LG

RED, LG

TAN, SM



RED, SM



ORANGE

**Olympia Suede, Large**

*Arg.Oly.Sd.Lg*

Suede

Internal zip pocket, phone slot,  
and key fob.

Handle drop 8"

9" W x 7.5" D x 9" H

Made in Argentina



BLACK, SM & LG

TAUPE, LG

Available Colors in Large:  
Taupe, Black, Olive, Orange,  
& Violet



**Olympia Suede, Small**

**Arg. Oly. Sd. Sm**

Suede

Internal zip pocket, phone slot,  
w/ key fob.

Handle drop 8.5".

12" W x 6" D x 14" H

Made in Argentina



OLIVE, SM & LG

VIOLET, SM & LG

ORANGE, SM & LG

Available Colors in Small:  
Black, Olive, Orange, &  
Violet



ORANGE



OLIVE, RED & TAUPE  
COMBO, LG

OLIVE, RED & TAUPE  
COMBO, SM

**Olympia Suede Combo,  
Large**

**Arg.Oly.SdCo.Lg**

Suede

Internal zip pocket, phone slot  
w/ key fob.

Handle drop 8.5".

12" W x 6" D x 14" H

*Made in Argentina*

**Olympia Suede Combo,  
Small**

**Arg.Oly.SdCo.Sm**

Suede

Internal zip pocket, phone slot  
w/ key fob.

Handle drop 8.5".

12" W x 6" D x 14" H

*Made in Argentina*



VIOLET, LIME &  
ORANGE COMBO, LG

VIOLET, LIME &  
ORANGE COMBO, SM





ORANGE

OLIVE

BLACK

CORN



BLACK

## Rosario

### *Arg.Ros*

Suede with leather and brass accents w/ magnet closure. Internal zip pocket, cell slot w/key fob.

Handle drop 10".

13" W x 7" D x 12" H

Made in Argentina

R o s a r i o

BLACK

www.tloekman.com • 404-748-1018



404-748-1018

RED

**Espuma, Suede**  
*Arg. Esp. Sd*  
Suede  
handle 10 in drop | internal zip  
size: 13 x 6 x 12 in  
pocket 8 x 6 in; 2.5 x 1 x 3.5  
in phone slot; key fob | zipper  
closure  
*Made in Argentina*



VIOLET

SAND

RED

BLACK





RED

**Espuma, Leather**

**Arg.Esp.L**

Leather

Internal zip pocket, phone slot,

key fob w/ zipper closure

Handle drop 10".

13" W x 6" D x 12" H

*Made in Argentina*



NATURAL  
LEATHER



RED

404-748-1018

1-800-404-748-1018

3



BLACK

TAUPE

SAND





ORANGE



VIOLET



RED



OLIVE



ROSE PINK



**Shopper**

**Arg.Shop**

Suede with snap closure  
Internal zip pocket, cell slot,  
w/ key fob  
Handle drop 7".  
15.5" W x 4.5" D x 12" H  
*Made in Argentina*

*\* Full color spectrum next page*

BLACK



RED



LIME



CHOCOLATE



TAUPE



IRIS BLUE



CORN



ORANGE



**Shopper**

**Arg.Shop**

Suede with snap closures.  
internal zip pocket , cell slot,  
w/ key fob

Handle drop 7".

15.5" W x 4.5" D x 12" H

Made in Argentina



T a m B

**Tam**

**Arg. Tam**

Suede with snap closure

Strap length 47".

8.3" W x .25" D x 6" H

Made in Argentina

BLACK

ORANGE

ROSE PINK

A

G





VIOLET  
IRIS BLUE  
BLACK



LIME

ROSE PINK

**T-Shirt Bag**

**Arg.TSh**

Suede with brass accents.  
internal pocket, cell slot,  
w/key fob

Adjustable strap length 41".

11.8" W x .5" D x 12.9" H

Made in Argentina



TOBACCO

OLIVE

GRASS / NAVY

**Wallets**

**Arg.Wal**

Suede w/ snap closure. Belt loop slot on larger. Interior sub-wallet (4.75" W x .25" D x 3.25" H).  
7.5" W x .25" D x 6" H  
*Made in Argentina*

VIOLET / ROSE

NAVY / GRASS

ROSE / VIOLET

www.tloockman.com • 404-748-1018

VIOLET / ROSE



OLIVE / ORANGE



GRASS / NAVY



NAVY / GRASS



RED / BROWN



ROSE / VIOLET



BROWN / RED



BLACK / BLACK



ORANGE / OLIVE



# eReader covers

## eReader Cover Arg.ERC

Suede two tone with magnetic snap closure, pen/pencil holder slot, with elastic tablet holders. Holds the following e-readers: Amazon Kindle® (6" models only), Barnes & Noble Nook® 7.7" model, nextbook® (models 2, 3, 5 & 6), BlackBerry Play-Book®, ViewSonic ViewPad 7", Maylong Universe M-150, Kobo® Wireless Reader, Ematic® 7", Aluratek® AEBK01FS, and the Archos® 70.  
8.5" H x 1" D x 6.5" W  
*Made in Argentina*



ORANGE / TAUPE

VIOLET / LIME

TAUPE / ORANGE

ELASTIC NOTEPAD  
HOLDER HOLDS A  
STANDARD 5" X 8"  
NOTEPAD.

OLIVE / RED

RED / OLIVE

LIME / VIOLET

Fits these popular  
Tablet e-Readers  
and more:



OLIVE / RED



**Mini Bag**  
*Arg. Mini*  
Suede & leather  
w/ snap closure  
Strap drop 25".  
7.5" W x .25" D x 7.5" H  
Made in Argentina



www.tloekman.com • 404-748-1018

MAX STYLE. MINI BAG.



COMBO IN VIOLET,  
ORANGE & LIME



COMBO IN VIOLET,  
ORANGE & LIME

t w o s i d e d  
C l u t

**Clutch**

*Arg.CI*

Suede with zip closure.  
External pocket.  
11" W x .25" D x 8.25" H  
Made in Argentina



COMBO IN OLIVE,  
RED & TAUPE



COMBO IN VIOLET,  
ORANGE & LIME



COMBO IN VIOLET,  
ORANGE & LIME



c h



**Leather Laptop Traveller**  
***Arg.Lap.L***

Leather

Large interior open pocket, Full 100% Cotton lining and zip closure. External lined front pocket (13.75" W x 1.25" D x 9" H)

Removable, adjustable 100% Cotton strap, 1" wide extends to 55.5"

17" W x 2.5" D x 11.5" H

*Made in Argentina*





ORANGE



STONE





OLIVE



STONE

TAUPE

**Suede Laptop Traveller**

**Arg.Lap.Sd**

**Suede**

Large interior open pocket, full 100% Cotton lining and zip closure. External lined front pocket ( 13.75" W x1.25" D x 9" H)

Removable, adjustable 100% Cotton strap, 1" wide extends to 55.5"

17" W x 2.5" D x 11.5" H

*Made in Argentina*



IVORY

**Monk Bag**

*Arg.Mk*

Leather

Internal pocket, cell slot

w/key fob

Strap drop 20".

30" W x 6" D x 12" H

*Made in Argentina*



RED

BLACK

LIME



ESPRESSO

IVORY



IVORY



TAN



TAN

BLACK

**Cala, Purse**  
**Arg. Cala.Ps**  
Pressed leather  
Internal pocket, cell slot  
w/ key fob.  
Handle drop 7.5".  
14" W x 5" D x 9" H  
*Made in Argentina*





TAN

BLACK



TAN

**Cala, Briefcase**

**Arg. Cala.BF**

Pressed leather  
Internal pocket, cell slot  
w/key fob.

Handle drop 8.5".

16" W x 4.5" D x 12" H

*Made in Argentina*

**Triband**

**Arg. Tri**

Suede

Internal pocket, cell slot

w/key fob

Handle drop 11"

18" W x 4"D x 13" H

Made in Argentina



TURQUOISE / ORANGE / TAUPE

PINK / STEEL / GRAPHITE





TURQUOISE / ORANGE / TAUPE



BLACK



TAN

BLACK



BLACK

o u r  
R E B E L  
B E L -  
L I O U S  
L I O U S  
M e s s e n g e r

**Messenger**

***Arg.Msg***

Pressed Leather  
Fold over closure, magnet  
adjustable strap. Internal pocket,  
cell slot w/ key fob.  
Strap length 42".  
12" W x 2.25" D x 11" H  
*Made in Argentina*

www.tlockman.com • 404-748-1018



NATURAL LEATHER TRIM,  
TEAL BLUE SUEDE ACCENT

RED LEATHER TRIM. GRAPHITE  
SUEDE ACCENT

BLACK LEATHER TRIM, HOT PINK  
SUEDE ACCENT

**Cargo Bag**

***Arg.Car***

100% Cotton canvas with suede  
& leather accents.

Internal pocket, cell slot w/key  
fob. Leather/ magnet closure  
and side clip.

Handle drop 12".

19" W x 9.25" D x 15.5" H

*Made in Argentina*



RED LEATHER TRIM.  
GRAPHITE SUEDE ACCENT

This playful collection of totes and bags are designed for us in France and made in India. Ranging from light weight cotton coin purses to laminate lined canvas totes perfect for the pool or beach, each bag has a light and fun feel while maintaining durability. This collection is of-the-moment, casual, and efficient.







T. LOCKMAN LLC  
Baobab  
Collection  
- France -



LIBERTY STYLE PRINT  
IN DARK BLUE





**Adjustable Pouch,  
Liberty Blue**

***BAO.AP.LiBI***

100% Cotton.

Lined interior. 2 front zip pockets

1 inside open pocket 9 x 6.25 in

front lower pocket 7 x 5 | front

upper pocket 10 x 10.5 in

Removable adjustable strap

extends to 62"

10.25" W x 10.75" H

*Imported from France*



LIBERTY STYLE PRINT  
IN DARK BLUE



**Osaka Bag**

**BAO.0s**

100% Cotton  
Lined interior. Internal zip  
pocket.  
Handle drop 10"  
11.5" x .25" x 15.75"  
*Imported from France*



KIMONO PRINT IN PINK



KIMONO PRINT IN PINK



HIBISCUS PRINT IN  
MANGO, WITH PINK  
LIBERTY ACCENT

**Hobo Bag, Hibiscus**  
**BAO.Bo.Hi**  
100% Cotton  
Lined interior.  
Strap drop 20".  
10.5" x 9.5".  
*Imported from France*



HIBISCUS PRINT IN  
BERRY, WITH SKY BLUE  
LIBERTY ACCENT



HIBISCUS PRINT IN  
MANGO, WITH PINK  
LIBERTY ACCENT



HIBISCUS PRINT IN  
LIME, WITH DARK BLUE  
LIBERTY ACCENT



**The Train Bag**

***BAO.Train***

100% Cotton

Lined interior with zip closure  
and open pocket on front.

Handle drop 8".

17.75" W x 4.25"D x 14" H

*Imported from France*







LIBERTY STYLE PRINT  
IN PALE BLUE & GREY



LIBERTY STYLE PRINT  
IN RED



LIBERTY STYLE  
PRINT IN ROSE PINK



**Pouchette in Liberty Style**

**BA0.Po.Li**

100% Cotton

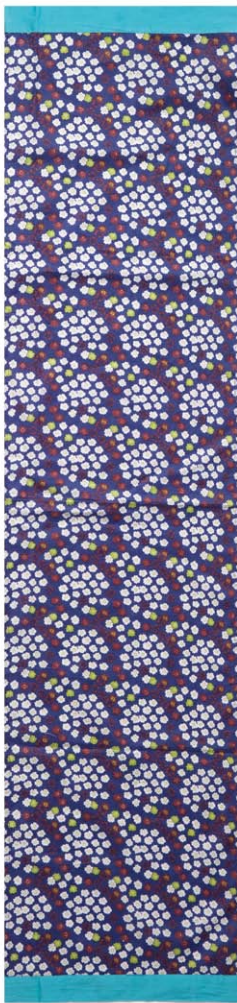
Lined interior with zip closure.

5" tall | length @ mouth 5.6"

| length @ "hip" 8" | length @

base 6"

*Imported from France*



Scarf, "Liberty" Style, Blue  
BAO.Sc.Lib  
100% Cotton  
54" L x 13.25" W  
*Imported from France*





ROSE PINK

**Deck Bag**  
**Bao.Deck.**  
100% Cotton Canvas  
Water-proof Laminate interior.  
Handle drop 5.5".  
17.5" W x 8"D x 15" H  
*Imported from France*



TEAL



ROSE PINK



STONE



TEAL



STONE

# DECKBAG



[www.tloekman.com](http://www.tloekman.com) • 404-748-1018

GS



BAOBAB. DECK BAG, RUST

www.tloockman.com • 404-748-1018



**Deck Bag**

***Bao.Deck.***

100% Cotton canvas

Water-proof Laminate interior.

Handle drop 5.5".

17.5" W x 8"D x 15" H

*Imported from France*



RUST



RUST





PLUM



PLUM



**Deck Bag**

***Bao.Deck.***

100% Cotton canvas

Water-proof Laminate interior.

Handle drop 5.5".

17.5" W x 8"D x 15" H

*Imported from France*



CIRCLES ON PLUM

CIRCLES ON PLUM



CIRCLES ON LIME



CIRCLES ON LIME

**Deck Bag**

**Bao.Deck.**

100% Cotton canvas  
Water-proof Laminate interior.  
Handle drop 5.5".  
17.5" W x 8"D x 15" H  
*Imported from France*

FULL PATTERN,  
TAUPE



FULL PATTERN,  
TAUPE



HALF PATTERN,  
TAUPE



FULL PATTERN,  
PINK



HALF PATTERN,  
TAUPE



FULL PATTERN,  
PINK



STEEL TRIM

PLUM TRIM



LIME TRIM



LIME TRIM

**Baobab Velvet Stripes**

***Bao.Vel***

100% Cotton velvet

Internal pocket.

Handle drop 8".

13.6" W x 2" D x 15.6" H

*Imported from France*

# T. LOCKMAN LLC Handbags & Accessories Definition of Terms

**Cabas:**

French word for a large, open mouthed bag or tote.

**Canvas:**

Thick cotton material.

**Cell slot:**

An internal pocket that holds a mobile phone.

**Expansion tabs:**

Folded fabric that, when unfolded, provides extra space.

**Key fob:**

A key chain attached to the inside of the purse.

**Linen:**

Lightweight material made from flax

**Recycled Leather:**

scraps of leather fused together with glue or similar compound, then pressed flat into shapes.

**Napa Leather:**

A full grain, top notch leather; usually from kid (baby goat), lamb, or sheepskin.

**Suede:**

A type of leather with a soft, napped (fuzzy) finish.

**Sustainable:**

Capable of being used repeatedly, without exhausting the resources or causing severe damage to the environment.

**Vegetable Dyes:**

Dyes derived from plants; can cause some irregularity in color quality, but contain fewer toxins than synthetic dyes.

**Pressed leather:**

Leather that has been embossed with a pattern.

**Weather-treated canvas:**

Canvas that has been treated to withstand some exposure to rain. Not 100% waterproof.



# T. LOCKMAN LLC Handbags & Accessories Care Instructions

## **For Leathers:** DRY CLEAN ONLY.

Keep in a dry place, away from direct sunlight to prevent fading.

We strongly discourage using cleaner of any kind on ink marks or grease stains. If necessary, spot treatment should be handled by a professional; however with darker leathers, most wear marks will eventually blend in.

If leather begins to dull, buff the surface with a wool cloth to restore luster.

## **For Suedes and Nubucks:** DRY CLEAN ONLY.

Keep in a dry place, away from direct sunlight to prevent fading.

Do not wash with soap or detergents. A suede or nubuck cleaning kit is strongly recommended and can be purchased from most shoe and luggage dealers.

For removal of spots and mild stains, gently sweep over the hide using a suede brush.

## **For Cotton Canvas & Treated Canvas:** DRY CLEAN ONLY.

Keep in a dry place, away from direct sunlight to prevent fading.

Do not attempt to clean pen or ink stains. Doing so will only cause them to spread.

Spot clean all other marks and mild stains with lukewarm water and very mild soap.

Store all canvas goods away from moths and insects.

## **For Wool Bags:** DRY CLEAN ONLY.

Spot clean with lukewarm water and very mild soap.

Store all wool goods away from moths and insects.

## **For Cloth Linings:** DRY CLEAN ONLY.

Baby wipes may be used for spot cleaning.

# T. LOCKMAN LLC Handbags & Accessories Color Index



## BLACK

24, 25, 26, 27, 28, 29, 39,  
46, 68, 88, 90, 91, 96,  
100, 101, 103, 104, 108,  
111, 113, 115, 118, 127,  
128, 129, 132



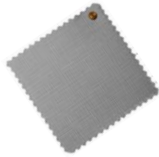
## DARK BROWN

20, 21, 24, 27, 39, 52,  
72, 73, 108, 115, 118,  
127



## CURRY

31, 37, 47, 51, 55,  
56, 60



## GREY

11, 12, 13, 17, 20, 21,  
33, 39, 43, 52, 53, 56,  
65, 66, 69, 71



## BROWN

14, 32, 37, 39, 57, 62,  
64, 68, 88, 113, 118



## YELLOW

31, 47, 100, 109, 112



## LIGHT GREY

43



## TAUPE

14, 22, 33, 47, 50, 64,  
70, 72, 73, 96, 102, 105,  
109, 112, 117, 118, 124



## STONE

30, 124, 127, 134, 148



## WHITE

92, 93



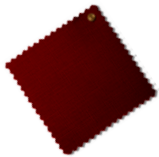
## TAN

52, 94, 95, 102, 103,  
110, 122, 128, 129, 132

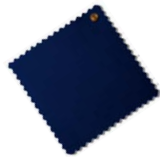


## NATURAL

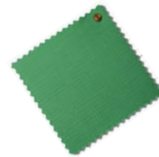
40, 43, 64, 148



**BURGUNDY**  
31, 32, 48, 50, 56, 65,  
112



**NAVY BLUE**  
14, 17, 57, 109, 113,  
115, 138



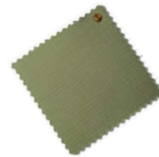
**GREEN**  
10 (Bronze), 79, 115



**RED**  
37, 94, 95, 102, 103,  
105, 108, 112, 115, 117,  
118, 121, 127, 146



**BLUE**  
36, 60, 78, 84, 144, 147



**OLIVE**  
14, 18, 19, 32, 37, 39,  
51, 57, 68, 72, 73, 97,  
98, 100, 105, 113, 115,  
117, 118, 124



**PINK**  
36, 47, 58, 59, 60, 76, 78,  
85, 106, 111, 113, 115,  
118, 130, 141, 143, 146,  
148, 157



**LIGHT BLUE**  
31, 36, 44, 46, 60, 76,  
78, 80, 81



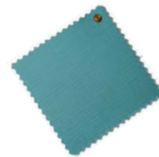
**LIME**  
108, 113, 117, 118,  
127, 143



**ORANGE**  
56, 89, 96, 97, 100, 104,  
105, 109, 111, 112, 117,  
118, 124, 143



**PURPLE**  
33, 47, 57, 60, 79, 82, 83,  
89, 96, 97, 99, 102, 103,  
105, 113, 115, 117, 118,  
120, 138, 153



**TEAL**  
79, 80, 82, 83, 125,  
148, 158

T. LOCKMAN LLC

BOOK TWO:

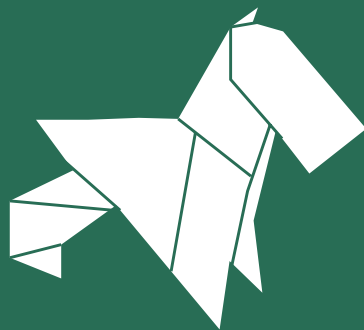
Gifts

Cashmere Comfort Sets ..... 166  
Origanimals™ ..... 168

BOOK TWO

T. LOCKMAN LLC

# Gifts



[www.tlockman.com](http://www.tlockman.com) • 404-748-1018

**Cashmere Comfort Set**  
100% Cashmere  
Hot Water Bottle and Cashmere  
Cover with matching socks.  
8" W x 13" H  
One size fits all socks.  
*Made in Scotland*



WHITE



LAVENDER

Originals® are numbered, limited-edition, sculptural design pieces. Handmade in the USA with 100% recycled scottish lambswool. Available animals are dog, giraffe, rhino, and elephant. Colors and patterns vary based on the recycled wool's availability. Styles consist of a strong accent pattern and secondary pattern/color. Exact patterns cannot be selected, however, look can be guided by selecting a specific design style. To order follow the customization steps below.

---

**STEP 1 -  
CHOOSE AN ANIMAL:**

|          |         |
|----------|---------|
| DOG      | GIRAFFE |
| ELEPHANT | RHINO   |

---

**STEP 2 -  
CHOOSE A DESIGN  
STYLE:**

Design style can be chosen from the following four themes:

**Traditional**  
( Design based around Classic Tartan patterns; excellent in traditional rooms with muted tones. )

**Modern**  
( Patterns combine to create an edgy, modern home feel. Ideal as a pop art style sculptural piece. )

**Bright**  
( Vibrant and eye catching; Ideal for saturated color schemes & children's rooms. )

**Pastel**  
( Subdued patterns in pastel tones; ideal for rooms with light & airy color schemes. )



ELEPHANT, PASTEL\*

GIRAFFE, MODERN\*

RHINO, TRADITIONAL\*



# nimals®

## ORIGINALS®

100% Recycled Lambswool  
imported from Scotland.  
Handmade in Limited Numbered Editions.

Colors & Styles vary.

Dog, 6" W x 19" D x 14" H

Elephant, 8.25" W x 19" D x 12" H

Giraffe, 6" W x 16" D x 17" H

Rhino, 5.5" W x 19" D x 9.5" H

(Sizes will vary slightly)

Made in USA



ELEPHANT, BRIGHT\*

DOG, TRADITIONAL\*

ELEPHANT, MODERN\*

\* Patterns used are just an example of the available styles. Actual colors & patterns will vary based on recycled wools availability.

# T. LOCKMAN LLC

## BOOK THREE:

### Purchasing Information

Retail Order Info ..... 172

To-The-Trade Order Info ..... 174

Wholesale Order Info ..... 176

BOOK THREE

T. LOCKMAN LLC

# Purchasing Information



# T. LOCKMAN LLC Retail Order Information

## RETAIL ORDER CONTACT INFORMATION:

Call Us at 404-748-1031

Hours of operation: Monday through Friday,  
9am -5pm EST.

To order by fax:  
Download and print faxable order form at:  
[www.tlockman.com/retail\\_orderform.pdf](http://www.tlockman.com/retail_orderform.pdf)  
Fax form to: 1-866-406-7416

## PRICE LISTS & PRICING:

On [www.tlockman.com](http://www.tlockman.com) in the "catalog" section select the appropriate price list type and fill out the request form. A current price list will be emailed to you as soon as the information is verified. Wholesale and To-the-Trade lists must have a proper Tax ID Number to receive a price list. All price lists will be updated monthly.

## RETAIL PAYMENT GUIDELINES

All payments must be made by a valid credit card. Checks or C.O.D are not accepted. "Web Specials" are only valid during the advertised special dates and are not valid on reorders. Retail consumers are only allowed to purchase from the retail price lists and designated retail areas of the website. Tax ID and/or Business license numbers are verified before all wholesale / To-the-trade accounts are created. Fraudulent numbers will result in an instant order cancellation and be charged a 50% cancellation fee.

## RETAIL ORDER CANCELLATION POLICIES

Stock item cancellations can only be done within 24 hours of placing the order at a 15% restocking fee. Any cancellation after 24 hours of non-stock items will incur a 50% restocking fee.

## SHIPPING POLICIES

We ship our in-stock products to arrive via UPS in 8-10 business days. When ordering please provide a daytime phone number for delivery. Any shipment outside of the continental United States require special shipping and the Retail Customer Service must be contacted at 404-748-1031. Shipping rates (shown below) are for each address. Orders usually ship within 48 hours of being charged unless the item is shipping from the origin mill, then arrival time is stated on in the items description. We do not ship outside the US and Canada, nor to the US Territories including Guam, Puerto Rico and the US Virgin Islands.

## PO / APO / FPO BOXES

We do not ship to PO Boxes. Please call Retail Customer Service at 404-748-1031 to place an order for APO or FPO addresses.

## SHIPPING CHARGES

We stock and ship our products via UPS to arrive within 8-10 business days. When ordering please provide a daytime phone number for delivery.

Charges below are for the continental 48 United States.

|              |                          |
|--------------|--------------------------|
| Up to \$150  | \$15                     |
| \$150 - 400  | 10% of merchandise total |
| \$401 - 499  | 8% of merchandise total  |
| \$500 & over | 5% of merchandise total  |

## ALASKA & HAWAII SHIPPING

For Shipping to Alaska and Hawaii contact Retail Customer Service at 404-748-1031.

## SHIPPING TO CANADA

All items ship from the United States. All prices shown are in US dollars. Please contact us directly at 404-748-1031 for shipments to Canada.

## RUSH DELIVERY

Rush delivery charges are only applicable for the continental 48 United States. Rush delivery is not available to APO/FPO addresses, PO Boxes or Canada. For Rush Delivery to Alaska and Hawaii or Overnight services in the Continental United States contact Retail Customer Service at 404-748-1031.

## RUSH DELIVERY CHARGES

|   |
|---|
| 1-2 day rush delivery                             |
| - Orders valued at \$350 or less additional \$150 |
| - Orders valued at \$350 or more additional \$250 |

|                       |
|-----------------------|
| 3-4 day rush delivery |
| - An additional \$125 |

## **SALES TAX**

Purchases from within the state of Georgia will be subject to a 4% sales tax on all purchases.

## **DAMAGED ITEM RETURN POLICIES**

All items are thoroughly inspected before shipping to insure no DOA arrivals. In the uncanny event that an item is delivered in an unusable state, a claim will be made with the appropriate shipping company for compensation and the item will be reissued. Do not accept a package from a shipper that demonstrates damage, i.e., holes, moisture, or extremely crushed.

Prior to returning a damaged item a Damage Authorization Number (D.A.N.) must be issued by a T.Lockman LLC customer service representative. The D.A.N. must be written on the original invoice and mailed back with the damaged product. The customer is responsible for shipping and insurance fees to return the damaged item. Upon receipt of the item a replacement item will be sent or a refund issued by check.

Display samples, clearance, and discontinued items are non-returnable or refundable. These nonrefundable items are marked as such upon purchase. One of a kind items such as Origanimals are not available for return, these art-items are handmade with recycled materials and irregularities are a part of the manufacturing. Returns are also not accepted for vintage, antique, special-order, non-stock or other handmade items.

## **STANDARD RETURN POLICIES**

Non-damaged item returns can only be made 30 days after purchase and will incur 15% restocking fee.

Prior to returning an item a Return Authorization Number (R.A.N.) must be issued by phone by a T.Lockman LLC customer service representative. The R.A.N. must be written on the original invoice and mailed back with the damaged product. The customer is responsible for shipping and insurance fees to return the damaged item. Upon receipt and inspection of the item a refund check will be issued.

Display samples, clearance, and discontinued items are non-returnable or refundable. These nonrefundable items are marked as such upon purchase. One of a kind items such as Origanimals are not available for return, these art-items are handmade with recycled materials and irregularities are a part of the manufacturing. Returns are also not accepted for vintage, antique, non-stock, special-order, non-stock or other handmade items.

## **ERRORS**

There may be errors in the prices, descriptions or images of certain merchandise, and we must reserve the right to restrict orders of those items.

## **PRODUCT QUALITY & VARIANCES**

T. Lockman, LLC handbags use natural dyes as colorants; which means there will be slight coloration differences. Animal hide products will occasionally have skin imperfections. The linen bags may also have milling imperfections, attributed to the materials construction prior to being bag crafted. These aspects are beyond our control and add to the natural materials character.

# T. LOCKMAN LLC To-The-Trade Order Information

## TO-THE-TRADE ORDER CONTACT INFORMATION:

Call us at 404-748-1018

Hours of operation: Monday through Friday.  
9am -5pm EST.

To order by fax:

Download and print faxable order form from:  
www.tlockman.com/tothetrade\_orderform.pdf. Fax form to: 1-866-406-7416

## PRICE LISTS & PRICING:

On www.tlockman.com in the "catalog" section select the appropriate price list type and fill out the request form. Wholesale and To-the-Trade lists must have a proper Tax ID Number to receive a price list. All price lists will be updated monthly.

## TO-THE-TRADE PAYMENT GUIDELINES

All order payments must be made by a valid credit card. Checks must fully clear before order ships. Bounced checks will be charged a \$50 fee and must remitted with a valid credit card for order completion. C.O.D is not excepted. "Web Specials" are only valid during the advertised special dates and are not valid on reorders. Retail consumers are only allowed to purchase from the retail price lists and designated retail areas of the website. Tax ID and/or Business license numbers are verified before all wholesale / To-the-trade accounts are created. Fraudulent numbers will result in an instant order cancellation and charged a 50% cancellation fee.

## TO-THE-TRADE NET TERM GUIDELINES

Net 30 days is available for AAA on S&P rated accounts. Non-Stock or New Release may require a 60% deposit and the 40% balance to be billed Net 30. Other or non-rated accounts must prepay by credit card. New accounts must fill a credit application for negotiation for extended payment terms and must be approved. No orders will be shipped on past due accounts, and may result in collections.

## TO-THE-TRADE ORDER CANCELLATION POLICIES

An order can only be cancelled within 48 hours of purchase and will incur a 50% cancellation fee.

## SHIPPING POLICIES

We ship our in-stock products to arrive via UPS from 8-10 business days. When ordering please provide a daytime phone number for delivery. Any shipments outside of the continental United States will require special shipping and the Retail Customer Service must be contacted at 404-748-1031. Shipping rates (shown below) are for each address. Orders usually ship within 48 hours of be-

ing charged unless the item is shipping from the origin mill, then arrival time is stated on in the items description. New shipments frequently arrive, so our in stock list is continually fluctuating. If something is ordered from our international mills, then shipping an item can take up to four to eight weeks, depending upon the mills production schedules. Consumers will be advised of any potential delivery delays within 48 hours of order placement. Orders placed at tradeshow will receive the delivery terms at time of order. We do not ship outside the US and Canada, nor to the US Territories including Guam, Puerto Rico and the US Virgin Islands. For sales and distribution outside the US and Canada a specific distribution agreement must be negotiated by T.Lockman Sales (404-748-1018).

## PO / APO / FPO BOXES

We do not ship to PO Boxes. Please call Customer Service at 404-748-1018 to place an order for APO or FPO addresses.

## SHIPPING CHARGES

We stock and ship our products via UPS to arrive within 8-10 business days. When ordering please provide a daytime phone number for delivery.

Charges below are for the 48 continental United states.

|              |                          |
|--------------|--------------------------|
| Up to \$150  | \$15                     |
| \$150 - 400  | 10% of merchandise total |
| \$401 - 499  | 8% of merchandise total  |
| \$500 & over | 5% of merchandise total  |

## ALASKA & HAWAII SHIPPING

For Shipping to Alaska and Hawaii contact To-The-Trade Customer Service at 404-748-1018.

## SHIPPING TO CANADA

All items ship from the United States. All prices shown are in US dollars. Please contact us directly at 404-748-1018 for shipments to Canada.

### SHIPPING USING SHIPPING ACCOUNTS

We are willing to utilize your internal Fed Ex or UPS Accounts for shipping. You will be charged a \$6.50 handling and packaging fee. To ship using a corporate account contact Wholesale Customer Service at 404-748-1018.

### RUSH DELIVERY

Rush delivery charges are only applicable for the continental 48 United States. Rush delivery is not available to APO/FPO addresses, PO Boxes or Canada. For Rush Delivery to Alaska and Hawaii or Overnight services in the Continental United States contact Retail Customer Service at 404-748-1018.

### RUSH DELIVERY CHARGES

|   |
|---|
| <b>1-2 day rush delivery</b>                      |
| - Orders valued at \$350 or less additional \$150 |
| - Orders valued at \$350 or more additional \$250 |

|                              |
|------------------------------|
| <b>3-4 day rush delivery</b> |
| - An additional \$125        |

### SALES TAX

Purchases within the state of Georgia will be subject to a 4% sales tax on all purchases.

### ITEM RETURN POLICIES

All items are thoroughly inspected before shipping to insure no DOA arrivals. In the uncanny event that an item is delivered in an unusable state, a claim will be made with the appropriate shipping company for compensation and the item will be reissued. Do not accept a package from a shipper that demonstrates damage, i.e., holes, moisture, or extremely crushed.

Prior to returning a damaged item a Damage Authorization Number (D.A.N.) must be issued by a T.Lockman LLC customer service representative. The D.A.N. must

be written on the original invoice and mailed back with the damaged product. The customer is responsible for shipping and insurance fees to return the damaged item. Upon receipt of the item a replacement item will be sent or a company account credit will be issued.

Display samples, clearance, and discontinued items are non-returnable or refundable. These nonrefundable items are marked as such upon purchase. One of a kind items such as Origanimals are not available for return. These art-items are handmade with recycled materials and irregularities are a part of the manufacturing. Returns are also not accepted for vintage, antique, special-order, non-stock or other handmade items.

### ERRORS

There may be errors in the prices, descriptions or images of certain merchandise, and we must reserve the right to restrict orders of those items.

### PRODUCT QUALITY & VARIANCES

T. Lockman, LLC handbags use natural dyes as colorants; which means there will be slight coloration differences. Animal hide products will occasionally have skin imperfections. The linen bags may also have milling imperfections, attributed to the material's construction prior to being bag crafted. These aspects are beyond our control and add to the natural material's character.

### SWATCHES & COLOR MATCHES

Upon request the closest matching pantone specifications for products can be provided. T.Lockman generally does not mail out individual color swatches. For a more thorough color matching a swatch can be mailed to T.Lockman and match verification can be confirmed before ordering. If you need color matching assistance contact customer service at 404-748-1018.

### TRADESHOW PURCHASES

All tradeshow purchases will be charged a 50% deposit at time of purchase. Any cancellations will forfeit the 50% deposit. The balance of the order and shipping will be charged at time of shipping.

# T. LOCKMAN LLC Wholesale Order Information

## RETAIL ORDER CONTACT INFORMATION:

Call us at 404-748-1018

Hours of operation: Monday through Friday.  
9am -5pm EST.

To order by fax:

Download and print faxable order form from:  
[www.tlockman.com/retail\\_orderform.pdf](http://www.tlockman.com/retail_orderform.pdf)  
Fax from to: 1-866-406-7416.

## PRICE LISTS & PRICING:

On [www.tlockman.com](http://www.tlockman.com) in the "catalog" section select the appropriate price list type and fill out the request form. Wholesale and To-the-Trade lists must have a proper Tax ID Number to receive a price list. All price lists will be updated monthly.

## WHOLESALE PAYMENT GUIDELINES

All payments must be made by check or a valid credit card. Checks must fully clear before order ships. Bounced checks will be charged a \$50 fee and must be remitted with a valid credit card for order completion. C.O.D is not accepted. "Web Specials" are only valid during the advertised special dates and are not valid on reorders. Retail consumers are only allowed to purchase from the retail price lists and designated retail areas of the website. Tax ID and/or Business license numbers are verified before all wholesale / To-the-trade accounts are created. Fraudulent numbers will result in instant order cancellation and charged a 50% cancellation fee.

## WHOLESALE NET TERM GUIDELINES

Net 30 days is available for AAA on S&P rated accounts. Non-Stock or New Release may require a 60% deposit and the 40% balance to be billed Net 30. Other or non-rated accounts must prepay by credit card. New accounts must fill a credit application for negotiation for extended payment terms and must be approved. No orders will be shipped on past due accounts, and may result in collections.

## WHOLESALE ORDER CANCELLATION POLICIES

An order can only be cancelled within 48 hours of purchase and will incur a 50% cancellation fee.

## SHIPPING POLICIES

We stock and ship our products to arrive via UPS from 8-10 business days. When ordering please provide a daytime phone number for delivery. Shipments outside of the continental United States require special shipping and the shipping rates (shown below) are for each address. Items in stock usually ship within 7 business days. New shipments frequently arrive, so our in stock list is

continually fluctuating. If something is ordered from our international mills, then shipping an item can take up to four to eight weeks, depending upon the mills production schedules. Consumers will be advised of any potential delivery delays within 48 hours of order placement. Orders placed at tradeshow will receive the delivery terms at time of order. We do not ship outside the US and Canada, nor to the US Territories including Guam, Puerto Rico and the US Virgin Islands. For sales and distribution outside of the US and Canada contact T.Lockman Sales at 404-748-1018.

## PO / APO / FPO BOXES

We do not ship to PO Boxes. Please call Customer service at 404-748-1018 to place an order for APO or FPO addresses.

## SHIPPING CHARGES

We stock and ship our products via UPS to arrive within 8-10 business days (Unless otherwise stated). When ordering please provide a daytime phone number for delivery.

Charges below are for the 48 Continental United states.

|              |                          |
|--------------|--------------------------|
| Up to \$150  | \$15                     |
| \$150 - 400  | 10% of merchandise total |
| \$401 - 499  | 8% of merchandise total  |
| \$500 & over | 5% of merchandise total  |

## ALASKA & HAWAII SHIPPING

For shipping to Alaska and Hawaii contact Wholesale Customer Service at 404-748-1018.

## SHIPPING TO CANADA

All items ship from the United States. All prices shown are in US dollars. Please contact us directly at 404-748-1018 for shipments to Canada.



## SHIPPING USING SHIPPING ACCOUNTS

We are willing to utilize your internal Fed Ex or UPS Accounts for shipping. You will be charged a \$6.50 handling and packaging fee. To ship using a corporate account contact Wholesale Customer Service at 404-748-1018.

## RUSH DELIVERY

Rush delivery charges are only applicable for the continental 48 United States. Rush delivery is not available to APO/FPO addresses, PO Boxes or Canada. For Rush Delivery to Alaska and Hawaii or Overnight services in the Continental United States contact Retail Customer Service at 404-748-1018.

|   |
|---|
| <b>1-2 day rush delivery</b>                      |
| - Orders valued at \$350 or less additional \$150 |
| - Orders valued at \$350 or more additional \$250 |

|                              |
|------------------------------|
| <b>3-4 day rush delivery</b> |
| - An additional \$125        |

## SALES TAX

Purchases from within the state of Georgia will be subject to a 4% sales tax on all purchases.

## ITEM RETURN POLICIES

All items are thoroughly inspected before shipping to insure no DOA arrivals. In the uncanny event that an item is delivered in an unusable state, a claim will be made with the appropriate shipping company for compensation and the item will be reissued. Do not accept a package from a shipper that demonstrates damage, i.e., holes, moisture, or extremely crushed.

Prior to returning a damaged item a Damage Authorization Number (D.A.N.) must be issued by a T.Lockman LLC customer service representative. The D.A.N. must be written on the original invoice and mailed back with

the damaged product. The customer is responsible for shipping and insurance fees to return the damaged item. Upon receipt of the item a replacement item will be sent or a company account credit will be issued.

Display samples, clearance, and discontinued items are non-returnable or refundable. These nonrefundable items are marked as such upon purchase. One of a kind items such as Origanimals are not available for return. These art-items are handmade with recycled materials and irregularities are a part of the manufacturing. Returns are also not accepted for vintage, antique, special-order, non-stock or other handmade items.

## ERRORS

There may be errors in the prices, descriptions or images of certain merchandise, and we must reserve the right to restrict orders of those items.

## PRODUCT QUALITY & VARIANCES

T. Lockman, LLC handbags use natural dyes as colorants; which means there will be slight coloration differences. Animal hide products will occasionally have skin imperfections. The linen bags may also have milling imperfections, attributed to the materials construction prior to being bag crafted. These aspects are beyond our control and add to the natural materials character.

## POINT OF SALE & DISPLAYS

The T.Lockman LLC Throw columns, constructed of wood and Plexiglas, are available for sale in customized heights and finishes. With an order of 15 or more throws you can request a column free of charge (shipping and handling not included). Posters, POP, POS and custom product photography are available for retailer usage. Contact Wholesale Customer service for additional information.

## TRADESHOW PURCHASES

All tradeshow purchases will be charged a 50% deposit at time of purchase. Any cancellations will forfeit the 50% deposit. The balance of the order and shipping will be charged at time of shipping.

## C o n t a c t

### RETAIL ORDER CONTACT INFORMATION:

**404-748-1031**

FAX: 866-406-7416

### WHOLESALE & FOR-THE-TRADE

#### CONTACT INFORMATION:

**404-748-1018**

FAX: 866-406-7416

#### Hours of operation:

Monday through Friday.

9am -5pm EST.

### OFFICE & WAREHOUSE ADDRESS:

1854 Marietta Blvd., NW

Atlanta, GA 30318

## C a t a l o g   D e s i g n

The Benjamin Harrison Blake Company  
An Advertising Agency

1854 Marrietta Blvd  
Atlanta, GA 30318

404-549-9789  
[www.bhbhlakecompany.com](http://www.bhbhlakecompany.com)

## P r o d u c t i o n   C r e d i t s

**PHOTOGRAPHY:**  
Benjamin Harrison Blake  
Photography  
[www.bhblakephoto.com](http://www.bhblakephoto.com)

**FASHION STYLING:**  
Tian Justman  
[www.tianjustman.com](http://www.tianjustman.com)

**HAIR & MAKE UP:**  
MaraZ  
[www.M-A-R-A-Z.com](http://www.M-A-R-A-Z.com)

### FASHION MODELS:

|                  |                    |
|------------------|--------------------|
| Madison Olson    | June Wind          |
| Lindsay Malphrus | Ana Bradfield      |
| Rachel Doebler   | Nicole Sapienza    |
| Hannah Kasulka   | Madeleine Goodhand |
| Hannah Johnson   | Jordan Stephens    |
| Jenni Lubozynski | Stephany Jakoby    |
| Natalie Koho     | Tyler Calkins      |
| Ketch Willis     | Holly Simpson      |
| Tian Justman     |                    |

High Design Products for Home & Life

T. LOCKMAN LLC

2011 CATALOG

